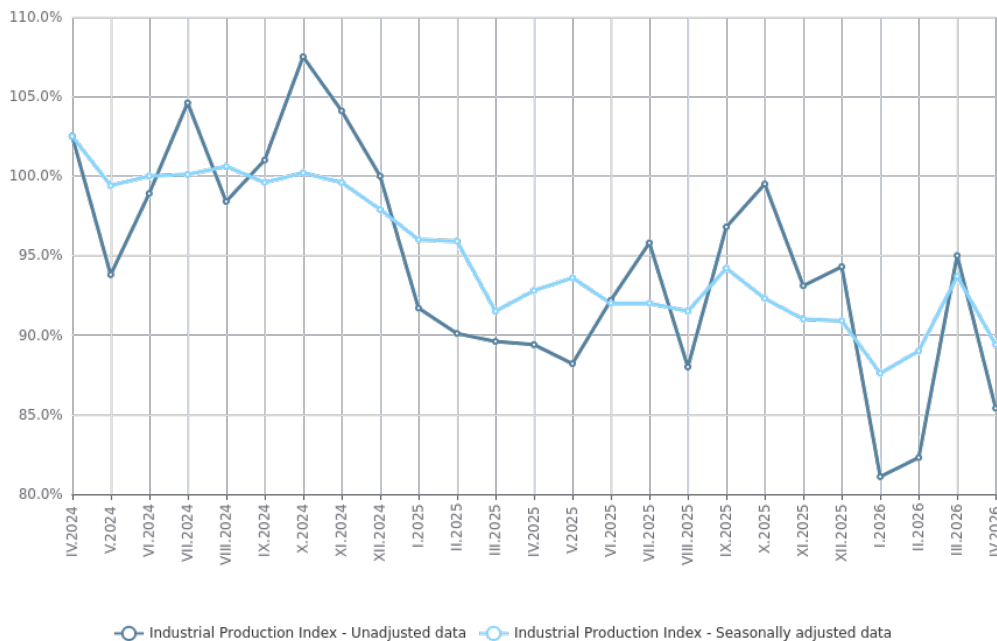




INDUSTRIAL PRODUCTION INDICES - APRIL 2026

The index of industrial production in April 2026 decreased by 4.6% compared to the previous month. The data are preliminary and seasonally adjusted. Compared to April 2025, a decline of 4.1% was registered in the calendar-adjusted index of industrial production.

Figure 1. Industrial Production Indices (2021 = 100)



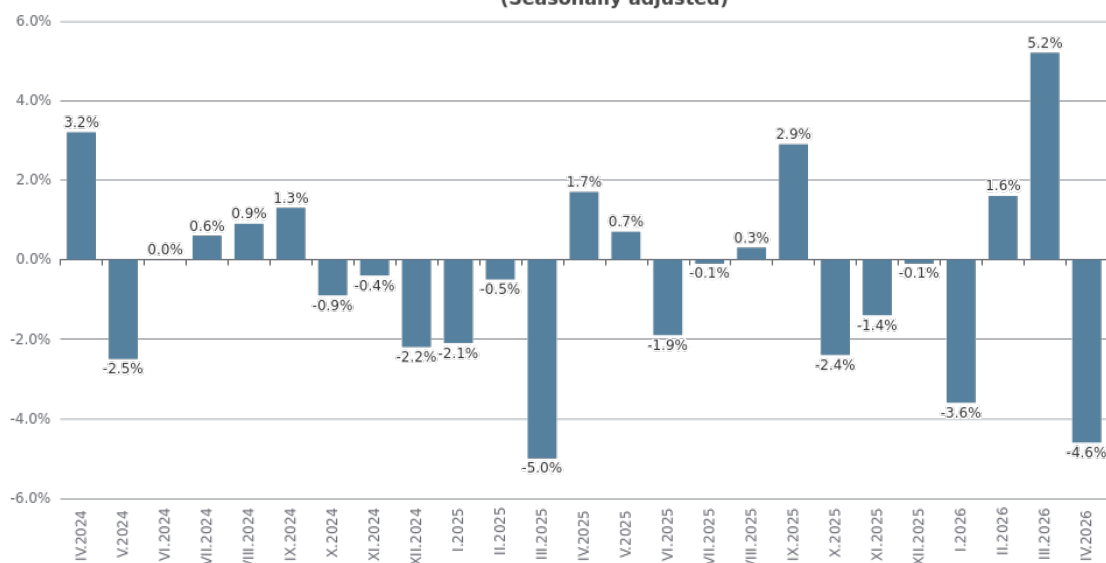
Monthly changes

In April 2026 compared to March 2026, a decrease was observed in the mining and quarrying industry - by 9.4%, in the manufacturing industry - by 3.4%, and in the electricity, gas, steam and air conditioning supply - by 1.3%.

A more significant decrease in the manufacturing industry was recorded in manufacture of computer, electronic and optical products - by 19.9%, and in manufacture of fabricated metal products, except machinery and equipment - by 16.4%.

Growth was registered in the manufacture of other transport equipment - by 12.5%, in the manufacture of wearing apparel - by 8.9%, and in the printing and reproduction of recorded media - by 8.5%.

Figure 2. Changes of Industrial Production Indices compared to the previous month (Seasonally adjusted)



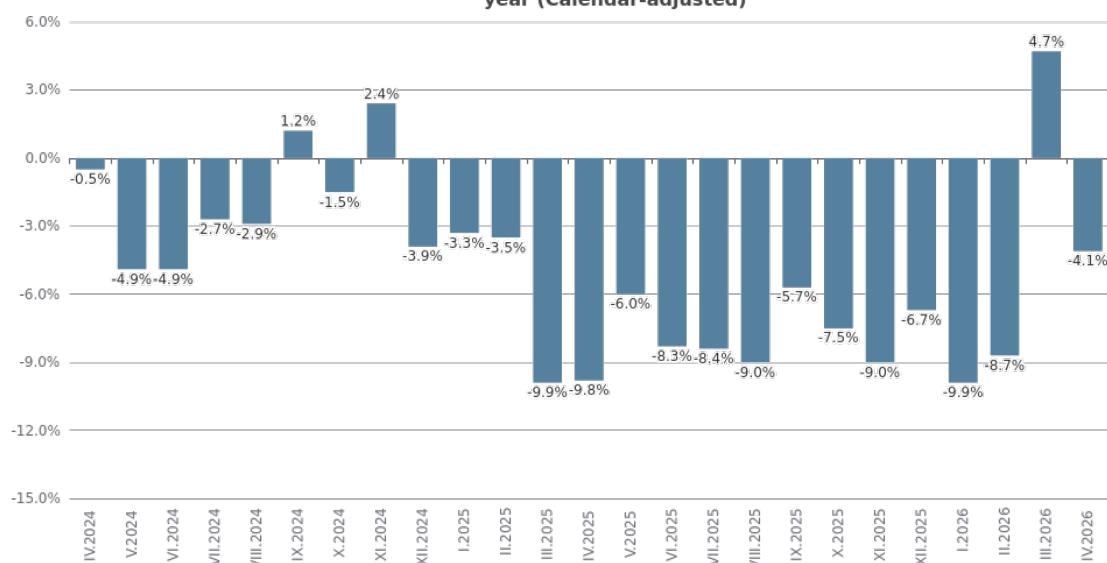
Annual changes

On an annual basis, a decrease in industrial production, calculated from calendar-adjusted data, was observed in the mining and quarrying industry - by 33.8%, in the electricity, gas, steam and air conditioning supply - by 13.9%, and in the manufacturing industry - by 0.1%.

In the manufacturing industry, significant drop compared to April 2025 was registered in the manufacture of leather and related products - by 32.0%, and in the manufacture of fabricated metal products, except machinery and equipment - by 25.6%.

An increase was recorded in the manufacture of basic pharmaceutical products and pharmaceutical preparations - by 20.6%, and in the manufacture of electrical equipment - by 8.9%.

Figure 3. Changes of the Industrial Production Indices compared to the same month of the previous year (Calendar-adjusted)



Methodological notes

The monthly indices of industrial production are calculated in accordance with the requirements of Regulation (EU) 2019/2152 of the European Parliament and of the Council on European Business Statistics.

In relation to the membership of Bulgaria in the euro area from the 1st of January 2026, the National Statistical Institute (NSI) is obliged to produce and publish Industrial Production Indices on the Non-domestic Market in the euro area and in the non-euro area. This is valid for all country members of the euro area.

The Monthly Industrial Production and Industrial Turnover Indices measure changes in production and turnover values of industrial enterprises. This information can be used to access the current economic development and for short-term forecasts. Indices do not measure the actual production level; they aim to measure the average change in the value of production between two points in time. Indices are compiled based on information collected through a representative sampling survey on industrial enterprises. The sample covers enterprises with an annual turnover of more than 97% of the total turnover in the industry.

The Industrial Production Indices are calculated at a constant base year, that is to say they are weighted with the structure of the value added at factor costs in the base year.

Seasonal adjustment is a statistical method which eliminates the seasonal component of the time series.

Calendar adjustment is an adjustment for variations in the monthly data, caused by calendar effects, the different number of calendar and working days in the months, national holidays and outliers (for example, the presence of more non-working days in May could contribute to the decline in production in some activities).

Changes of Industrial Production Indices compared to the previous month							
							(Per cent)
Economic activities	NACE.BG - 2008	XI.2025	XII.2025	I.2026	II.2026	III.2026	IV.2026*
Industry	B_TO_E36	-1.4	-0.1	-3.6	1.6	5.2	-4.6
Mining and quarrying	B	22.9	-14.8	-18.8	-5.8	-2.0	-9.4
Mining of coal and lignite	B05
Extraction of crude petroleum and natural gas	B06
Mining of metal ores	B07	8.3	-12.4	-13.5	-14.7	-2.8	-10.2
Other mining and quarrying	B08	4.9	6.1	-2.8	-0.5	7.5	-2.6
Mining support service activities	B09
Manufacturing	C	1.4	0.2	-4.3	4.2	2.1	-3.4
Manufacture of food products	C10	6.6	-0.1	-3.6	1.4	8.9	-2.3
Manufacture of beverages	C11	6.9	4.8	-5.4	4.5	-2.4	-2.5
Manufacture of tobacco products	C12	3.2	25.2	12.0	-4.5	-5.7	-0.2
Manufacture of textiles	C13	5.8	-8.2	-12.5	17.7	-8.5	4.7
Manufacture of wearing apparel	C14	-4.5	4.6	-1.4	-0.8	-6.7	8.9
Manufacture of leather and related products	C15	-3.5	-0.7	-30.4	8.8	-3.3	1.9
Manufacture of wood and of products of wood and cork, except furniture; manufacture of articles of straw and plaiting materials	C16	2.0	5.4	3.3	-12.7	11.5	-7.2
Manufacture of paper and paper products	C17	-6.3	1.1	3.7	1.2	4.2	-1.3
Printing and reproduction of recorded media	C18	-8.4	7.3	-3.7	5.0	-1.1	8.5
Manufacture of coke and refined petroleum products	C19
Manufacture of chemicals and chemical products	C20	5.1	2.6	4.6	-1.4	0.2	1.1
Manufacture of basic pharmaceutical products and pharmaceutical preparations	C21	5.0	-11.3	7.8	5.9	7.3	-5.0
Manufacture of rubber and plastic products	C22	5.8	-6.2	5.8	1.2	0.6	-0.1
Manufacture of other non-metallic mineral products	C23	3.5	-7.0	-5.7	1.8	4.1	2.0
Manufacture of basic metals	C24	-1.1	-10.8	12.4	3.4	-5.9	-2.4
Manufacture of fabricated metal products, except machinery and equipment	C25	-12.3	8.6	-0.5	1.8	-8.1	-16.4
Manufacture of computer, electronic and optical products	C26	3.7	14.1	-17.5	1.8	23.1	-19.9
Manufacture of electrical equipment	C27	21.7	25.0	-39.8	9.1	10.5	0.7
Manufacture of machinery and equipment n.e.c.	C28	1.9	5.5	-7.1	0.7	6.0	-3.8
Manufacture of motor vehicles, trailers and semi-trailers	C29	-10.9	5.8	-10.2	0.6	3.1	-1.8
Manufacture of other transport equipment	C30	-16.2	2.9	-7.7	4.6	-7.8	12.5
Manufacture of furniture	C31	-6.7	-2.1	0.3	1.1	-3.7	3.2
Other manufacturing	C32	-12.9	14.6	-20.5	12.6	-6.7	4.4
Repair and installation of machinery and equipment	C33	11.8	-5.9	-1.1	1.8	12.5	-4.1
Electricity, gas, steam and air conditioning supply	D	-34.5	29.9	0.7	-7.9	15.7	-1.3
Electricity, gas, steam and air conditioning supply	D35	-34.5	29.9	0.7	-7.9	15.7	-1.3
Seasonally adjusted.							
* Preliminary data.							
„..“ - Confidential data.							

Table 2

Changes of Industrial Production Indices compared to the same month of the previous year							
							(Per cent)
Economic activities	NACE.BG - 2008	XI.2025	XII.2025	I.2026	II.2026	III.2026	IV.2026*
Industry	B_TO_E36	-9.0	-6.7	-9.9	-8.7	4.7	-4.1
Mining and quarrying	B	12.5	-22.3	-23.4	-23.2	-27.3	-33.8
Mining of coal and lignite	B05
Extraction of crude petroleum and natural gas	B06
Mining of metal ores	B07	27.2	-12.4	-18.3	-22.0	-29.9	-39.1
Other mining and quarrying	B08	-12.8	2.3	-10.7	12.7	13.2	3.5
Mining support service activities	B09
Manufacturing	C	-4.3	-1.2	-7.0	0.0	3.9	-0.1
Manufacture of food products	C10	-8.9	-9.7	-9.9	-0.3	8.2	3.9
Manufacture of beverages	C11	-3.1	1.6	-5.9	0.8	1.8	-2.5
Manufacture of tobacco products	C12	26.4	36.2	66.6	47.3	22.3	3.4
Manufacture of textiles	C13	-0.6	-13.2	-18.7	-3.8	-11.4	-7.3
Manufacture of wearing apparel	C14	-24.1	-2.8	-5.1	-5.9	-10.3	-4.0
Manufacture of leather and related products	C15	-7.8	1.5	-33.3	-23.1	-25.1	-32.0
Manufacture of wood and of products of wood and cork, except furniture; manufacture of articles of straw and plaiting materials	C16	-13.6	-10.0	-2.5	-15.3	-1.3	-7.7
Manufacture of paper and paper products	C17	-23.3	-16.7	-2.3	-4.9	2.4	1.1
Printing and reproduction of recorded media	C18	-14.4	-4.2	-8.4	0.4	-6.3	6.9
Manufacture of coke and refined petroleum products	C19
Manufacture of chemicals and chemical products	C20	-18.4	-10.3	-1.4	0.5	1.8	4.9
Manufacture of basic pharmaceutical products and pharmaceutical preparations	C21	17.2	-13.4	2.5	19.9	21.0	20.6
Manufacture of rubber and plastic products	C22	-1.9	-10.5	1.3	3.5	3.6	1.6
Manufacture of other non-metallic mineral products	C23	13.3	-10.7	-18.1	-4.1	-4.0	6.8
Manufacture of basic metals	C24	-6.4	-3.3	13.8	15.2	5.3	5.2
Manufacture of fabricated metal products, except machinery and equipment	C25	-13.3	-2.2	-15.0	5.5	-14.6	-25.6
Manufacture of computer, electronic and optical products	C26	3.4	21.1	14.9	0.2	14.2	6.2
Manufacture of electrical equipment	C27	14.2	57.7	-7.1	6.3	16.9	8.9
Manufacture of machinery and equipment n.e.c.	C28	8.1	11.7	1.6	-2.6	2.7	4.7
Manufacture of motor vehicles, trailers and semi-trailers	C29	-6.6	10.1	-17.8	-15.8	-15.7	-15.6
Manufacture of other transport equipment	C30	-17.7	-15.8	-23.3	-31.6	-13.8	-16.6
Manufacture of furniture	C31	18.7	11.6	16.2	8.4	-9.5	6.2
Other manufacturing	C32	-4.5	0.6	-4.9	-10.0	-1.4	-11.1
Repair and installation of machinery and equipment	C33	5.9	-5.5	-16.9	-0.6	18.0	6.8
Electricity, gas, steam and air conditioning supply	D	-43.4	-14.1	-18.5	-36.6	35.7	-13.9
Electricity, gas, steam and air conditioning supply	D35	-43.4	-14.1	-18.5	-36.6	35.7	-13.9
Calendar-adjusted.							
* Preliminary data.							
„..“ - Confidential data.							

Table 3

Industrial Production Indices (Seasonally adjusted, 2021 = 100)													
NACE.BG - 2008	IV.2025	V.2025	VI.2025	VII.2025	VIII.2025	IX.2025	X.2025	XI.2025	XII.2025	I.2026	II.2026	III.2026	IV.2026*
B_TO_E36	92.7	93.4	91.6	91.6	91.9	94.5	92.3	91.0	90.9	87.6	89.0	93.7	89.4
B	83.1	83.9	97.3	86.4	93.9	89.9	78.2	96.1	81.9	66.5	62.6	61.4	55.6
B05
B06
B07	95.1	91.4	105.0	101.3	105.2	108.7	102.8	111.3	97.5	84.3	71.9	69.9	62.8
B08	77.6	76.2	73.5	76.6	79.5	76.5	71.1	74.6	79.1	76.9	76.5	82.3	80.2
B09
C	99.6	101.6	99.2	101.1	101.7	103.9	100.3	101.8	102.0	97.6	101.7	103.8	100.3
C10	90.9	91.6	88.8	89.9	89.6	85.2	84.5	90.1	90.0	86.8	88.0	95.8	93.6
C11	96.7	95.3	94.5	91.0	90.6	92.2	89.0	95.1	99.7	94.3	98.5	96.1	93.7
C12	116.3	102.2	99.2	92.6	87.9	103.6	85.5	88.2	110.5	123.8	118.1	111.4	111.1
C13	54.3	51.6	47.8	54.9	52.4	48.4	51.5	54.5	50.0	43.8	51.5	47.1	49.3
C14	76.9	72.5	77.8	71.2	70.3	70.6	73.7	70.3	73.6	72.6	72.0	67.2	73.2
C15	67.8	65.1	63.2	57.6	63.9	68.5	64.1	61.9	61.4	42.7	46.5	45.0	45.8
C16	82.4	78.7	78.5	77.6	78.6	81.1	76.3	77.8	82.0	84.7	73.9	82.4	76.5
C17	73.9	71.5	70.3	72.5	71.2	71.7	72.8	68.2	69.0	71.6	72.4	75.5	74.4
C18	90.6	91.9	93.0	88.1	90.2	87.8	88.9	81.4	87.3	84.1	88.3	87.3	94.7
C19
C20	91.7	98.5	89.1	92.2	96.8	91.9	84.8	89.1	91.4	95.7	94.3	94.5	95.5
C21	108.3	110.8	127.0	115.3	124.4	123.8	118.9	124.9	110.8	119.4	126.4	135.6	128.9
C22	82.1	79.7	81.0	78.4	77.3	80.2	77.8	82.3	77.2	81.6	82.6	83.1	83.0
C23	95.3	106.5	103.8	106.6	105.7	107.5	103.8	107.5	99.9	94.2	95.9	99.9	101.8
C24	72.5	72.9	70.8	77.2	73.4	77.6	82.1	81.2	72.5	81.5	84.3	79.3	77.4
C25	167.7	170.0	144.9	170.0	179.9	188.8	172.6	151.4	164.4	163.5	166.5	153.0	128.0
C26	99.7	102.6	108.4	102.2	107.6	124.4	109.9	114.0	130.0	107.2	109.1	134.4	107.6
C27	108.5	101.7	98.7	96.8	98.8	102.9	102.8	125.2	156.5	94.3	102.8	113.6	114.4
C28	93.5	94.8	93.2	91.8	99.0	96.7	95.5	97.3	102.6	95.3	96.0	101.8	97.9
C29	115.0	120.7	113.1	112.6	104.6	108.9	112.0	99.8	105.6	94.8	95.4	98.4	96.6
C30	105.4	98.0	87.8	68.0	65.7	89.9	97.7	81.9	84.2	77.7	81.3	75.0	84.4
C31	89.7	93.6	86.2	89.3	94.3	98.7	102.9	96.0	94.1	94.3	95.3	91.8	94.8
C32	131.2	130.5	113.6	128.9	111.8	125.1	134.0	116.8	133.8	106.4	119.8	111.7	116.6
C33	109.3	99.9	117.0	118.4	125.8	131.5	102.1	114.1	107.4	106.3	108.2	121.7	116.7
D	73.5	67.7	63.2	63.1	53.8	62.3	68.6	44.9	58.4	58.8	54.2	62.7	61.9
D35	73.5	67.7	63.2	63.1	53.8	62.3	68.6	44.9	58.4	58.8	54.2	62.7	61.9
* Preliminary data.													
...“ - Confidential data.													

Table 4

Industrial Production Indices (Calendar-adjusted, 2021 = 100)													
NACE.BG - 2008	III.2025	IV.2025	V.2025	VI.2025	VII.2025	VIII.2025	IX.2025	X.2025	XI.2025	XII.2025	I.2026	II.2026	III.2026*
B_TO_E36	89.1	89.1	92.9	94.4	89.7	96.8	98.1	95.4	94.9	81.8	82.8	96.1	85.4
B	75.5	76.8	93.9	82.5	94.2	96.9	85.5	104.0	92.6	63.2	57.7	59.5	49.9
B05
B06
B07	90.6	91.4	113.6	96.5	112.6	117.7	97.8	122.5	108.7	75.5	66.1	66.8	55.2
B08	76.1	79.2	78.6	80.5	83.5	81.4	79.9	83.8	80.4	56.1	59.4	78.8	78.8
B09
C	98.0	100.7	103.3	104.9	98.4	106.9	108.4	106.5	101.4	86.9	93.2	107.8	97.9
C10	87.6	90.3	89.2	89.8	91.2	88.2	93.4	94.2	93.0	78.6	76.8	95.9	91.0
C11	93.0	97.1	113.1	111.3	110.5	103.5	81.4	87.6	96.5	70.1	73.1	88.0	90.8
C12	127.3	119.4	121.1	118.1	90.2	114.6	89.0	81.3	100.6	88.1	93.3	117.9	131.6
C13	54.0	54.9	50.9	56.4	43.8	49.2	54.7	58.9	44.7	38.7	52.1	50.1	50.1
C14	69.7	65.5	85.0	80.4	65.6	69.3	78.2	72.4	71.8	76.8	72.7	65.0	66.9
C15	67.3	62.0	67.9	61.9	51.2	68.7	71.5	71.4	57.7	41.8	45.0	46.8	45.7
C16	82.7	81.7	82.0	82.3	75.9	84.1	81.0	84.4	77.7	74.2	65.5	84.5	76.4
C17	71.0	71.1	74.0	76.6	66.4	72.0	81.2	73.4	62.5	67.6	67.4	78.9	71.8
C18	89.1	92.0	97.1	86.8	83.4	84.2	95.2	91.6	92.9	74.9	79.8	89.6	95.2
C19
C20	92.7	97.8	91.5	93.0	92.7	90.8	85.0	91.7	90.5	90.4	89.6	103.6	97.2
C21	106.2	107.2	141.8	112.1	116.1	116.2	125.9	131.2	110.1	116.8	115.3	151.2	128.1
C22	81.8	79.2	85.5	81.7	72.3	82.9	84.1	86.3	69.3	75.6	78.2	87.6	83.1
C23	96.1	112.9	109.0	115.6	108.7	113.1	113.7	115.3	92.2	69.5	79.8	99.1	102.7
C24	73.1	75.6	72.4	78.2	66.8	76.5	89.6	86.9	63.0	80.7	82.8	84.6	77.0
C25	169.5	166.6	147.3	182.9	177.7	192.5	184.0	164.0	169.5	130.7	147.3	154.4	126.1
C26	96.8	98.7	114.5	104.8	94.5	128.3	122.1	120.6	126.3	98.2	104.9	146.0	102.9
C27	107.9	95.5	106.1	100.2	91.4	105.8	108.7	128.2	136.6	85.2	102.0	119.9	117.6
C28	94.7	92.9	98.1	93.6	87.7	98.5	103.5	101.8	100.0	85.1	93.1	110.5	99.1
C29	114.9	119.4	116.5	106.6	92.1	108.1	119.4	106.6	93.5	95.1	96.8	105.9	97.0
C30	110.4	98.0	91.3	62.9	59.4	88.7	112.8	79.9	75.5	62.5	85.0	70.4	92.1
C31	87.9	93.6	90.7	91.8	89.8	99.7	111.9	100.3	91.1	81.5	91.0	93.3	93.4
C32	127.5	129.1	129.0	130.5	110.0	130.3	149.0	124.1	123.1	90.5	105.6	111.7	113.4
C33	99.3	93.6	120.6	120.0	123.3	141.0	106.5	124.2	141.9	78.4	91.4	121.8	106.0
D	63.4	51.3	52.4	59.8	52.6	58.0	65.8	49.1	70.2	71.1	57.5	72.4	54.6
D35	63.4	51.3	52.4	59.8	52.6	58.0	65.8	49.1	70.2	71.1	57.5	72.4	54.6
* Preliminary data.													
...“ - Confidential data.													